

POSTER PRESENTERS

Fellow

MEDICINE

Jessica Chung, MD, MPH

Epidemiology and Clinical Outcomes of Staphylococcus Lugdunensis Bacteremia

OBSTETRICS & GYNECOLOGY

Farah Alsayed, MD

Predictive Value of Abdominal Circumference for Growth Restriction

Itamar Futterman, MD

Machine Learning for the Prediction of Surgical Morbidity in Placenta Accreta Spectrum

Judy Hayek, MD

Overall Survival Following Interval Complete Gross Resection of Advanced Ovarian Cancer via Laparoscopy versus Open Surgery: An Analysis of the National Cancer Database

Jennifer Wolf, MD

Trends in Early-Stage Cervical Cancer Management in the US: A National Cancer Database Analysis

Jennifer Wolf, MD

Response Rates to Immunotherapy in Recurrent Endometrial Cancer: The Role of Race and Platinum-Sensitivity

PEDIATRICS

Natasha Jouk, MD

Breaking the Cycle: Can Incorporated Structured Reflection during Parental ACE Screening Impact Future Intention to Incorporate Positive Parenting Practices?

SURGERY

Yanyu Long, MBBS

Evaluating ChatGPT's Proficiency in Solving Clinical Problems in Vascular Surgery

Nurse

CASE MANAGEMENT

Megan Holmes, RN, MSN

Combatting Sepsis: A Nursing-Led Approach to Prevent Readmissions

NURSING

AnnaMarie Sammartino, DNP, RN, OCN

Meta-analysis: Early integration of palliative care services improves End of Life experiences.

Performance Improvement

EMERGENCY DEPARTMENT

Mark Profesorske, NP, DNP Candidate

The Case of Broken Telephone; Exploring The Benefits of Linear Systems Based Reporting as a Handoff Tool in a Pediatric Emergency Department

NURSING

Rosamond Bobb-King, MSN, CCRN, SCRNP, RN

Reducing central line-associated bloodstream infections (CLABSI) utilizing the Comprehensive Unit-based Safety Program (CUSP)

Jovileen Dalman, BSN, RN

Implementation of the "Mobilize for Zero" Program to Improve Outcomes in Patients at Risk for Hospital Acquired Pressure Injuries

Rachel Jones, RN

Enhancing patient and staff experience through implementation of the biobehavioral family model on a pulmonary medical care unit.

Nilu Mathen, BSN, RN

Reducing 30-day readmission rate in heart failure (HF) patients with increased knowledge of social determinants of health (SDOH) screening and resources



Fabienne Ulysse, DNP, AOCNP, MSN, ANP-BC

The provider's role in oral chemotherapy adherence: standardized assessment and documentation

Fabienne Ulysse, DNP, AOCNP, MSN, ANP-BC

Implementing targeted radioligand therapy to improve overall survival in metastatic prostate cancer patients

NURSING EDUCATION

Sharon Mok, RN, MSN-Ed, TCRN

Effect of Relaxation Interventions on Stress and Burnout in SICU/PCSU Nursing Staff

PEDIATRICS

Stephanie Aronson, MD

Increasing Resident Comfort With Transgender Patient Care

Saxony Busta, DO

Improving Interdepartmental Patient Handoff

Angelica Pacheco, MD

Improving Resident Comfort Level in the PICU through the Implementation of a Pediatric Critical Care Core Curriculum Combined with Just In Time learning

Roxanne Waggoner, DO

Implementing In Situ Mock Codes in a Pediatric Residency Program

POPULATION HEALTH

Magdalena Gordon, LMSW

Community Care of Brooklyn Navigator: Addressing Health Equity through Social Determinants of Health Care Coordination

Tomo Hirano, MPH

Evaluating a Collaborative LegalHealth Clinic Model in Brooklyn

Brian Timmermans, Staff

Evaluating Health Home's Effectiveness on Clinical Utilization by Unhoused Individuals in Brooklyn

PSYCHIATRY

Wonyun Lee, MBBS

Increasing Awareness and Referral Rates to Psychosocial Rehabilitation, with a focus on Peer Services

Samantha Lichtschein, DO

Management of Alcohol Withdrawal and Implementing a revised CIWA Protocol: A Quality Improvement Project

Mariella Suleiman, MD

Management of agitation in pregnancy: collaborative education to improve safety and care

QUALITY MANAGEMENT

Ilya Goldstein, MPH

Reducing Readmission through the Care Partner Initiative

SURGERY

Emil DeLuca, Administrative Coordinator

Procedural Safety Process Project – Improving compliance with the Time out and Sign Out (debrief) Elements of the 3-part Procedural Safety Process

Alexa Griffiths, MD

The Breast Surgery Whiteboard Time Out: A Tool to Enhance Trainee Autonomy in Breast Surgical Oncology

Jenna Kroeker, MD

Implementation of an evidence based CT scan algorithm to reduce radiation exposure in pediatric trauma patients

Arielle Roberts, DO

The Timing of a Multidisciplinary Approach to the Management of Deep Sternal Wound Infection after Cardiac Surgery

Gene Sobol, MPH

Outcomes in undertriaged elderly trauma patients based on the Cribari Matrix Method

Gene Sobol, MPH

Post-Implementation Review of C-SATS as a method of surgical performance assessment and enhancement of operative skills.

POSTER PRESENTERS

Resident

ANESTHESIA AND EMERGENCY MEDICINE

Tommy Nguyen, MD

Comparison of Nebulized Ketamine to Intravenous Sub-Dissociative Dose Ketamine for Treating Acute and Chronic Painful Conditions in the Emergency Department: A Prospective, Randomized, Double-Blind, Double-Dummy Clinical Trial

MEDICINE

Omar Khan, MBBS

Is Chat GPT The Future of Diagnostic Medicine? Retrospective Comparison on Real Time Patients in a Teaching Hospital.

Syed Mujtaba Baqir, MBBS

Angiodysplasia vs non-angiodysplasia gastrointestinal bleed: effect of race and gender

Saumya Nanda, MBBS

Can Artificial Intelligence Answer Nuanced Subspecialty Questions In Cardiology: The Case Of ChatGPT Attempting To Answer The CathSAP Questions

Matania Yehounatan, MD

The Impact of COVID-19 on the Incidence and Characteristics of Tuberculosis Disease

OBSTETRICS & GYNECOLOGY

Blessing Ajayi, MD

The Relationship of Patient/ Provider Racial Concordance to NTSV Cesarean Delivery Rates

Natalia Alexandridi, MD

Great Grand Multiparity! - Do they pose a urogynecologic problem?

Alexandra Dadrat, MD

Physicians' and Patients' Beliefs on Touch in the Patient-Physician Relationship

Nicole Goncalves, MD, MS

Can we shorten abortion times? A retrospective case series on shorter Mifepristone - Misoprostol interval

Thammatat Vorawandthanachai, MD

What's in a Name? Provider type and delivery outcomes for nulliparous, term, singleton, vertex pregnancies in an urban hospital

ORTHOPEDICS

Charles Conway, MD

Depressive Disorder and Trimalleolar Fractures: An Analysis of Outcomes and Costs

Alexandria Debasitis, MD

Emergency Department Revisit and Readmission Rates after Trimalleolar Fracture Surgery

Keith Diamond, MD

Temporal Shifts in Patient Demographics and Management Approaches for Guyon Canal Syndrome

Andrew Horn, MD

Comparing Outcomes and Costs: TSA Ambulatory vs. Hospital Surgery Centers

Aaron Lam, MD

Trends of Lapidus Procedure Use for the Treatment of Hallux Valgus: A Decade-Long Retrospective Analysis from 2010-2020

Aaron Lam, MD

Orthopaedic Injury Patterns and Trends following New York City's Electric Scooter and Bike Legalization: Data from an Urban Level 1 Trauma Center

Gabriel Lama, MD

Timing of Hip and Knee Arthroplasty

Matthew Magruder, MD

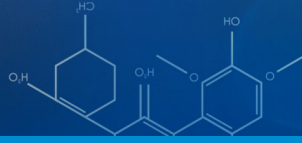
Efficacy of Performing Primary Cementless TKA for Osteoporotic Patients

Matthew Magruder, MD

Semaglutide Use Prior to Total Hip Arthroplasty Results in Fewer Postoperative Prosthetic Joint Infections and Readmissions

Matthew Magruder, MD

Evaluating Total Hip Arthroplasty Outcomes in Young Adults: A Focus on the 30-40 Age Group



Matthew Magruder, MD

Impact of Depression on Total Hip Arthroplasty for Femoral Neck Fractures: A Study on Length of Stay, Complications and Costs

Chaim Miller, MD

Demographic Analysis and Cost Trends: Total Wrist Arthroplasty vs. Wrist Fusion for Severe Wrist Osteoarthritis

Chaim Miller, MD

Cost and Utilization Trends: Metacarpal and Phalangeal Shaft Fracture Treatments in Adults and Children

Mitchell Ng, MD

Inpatient Mortality Trends in Elderly Traumatic Spinal Cord Injury: A Comparative Analysis

Mitchell Ng, MD

Which Comorbidities are Associated with Developing DVT Following Primary Single Level Lumbar Fusion?

Mitchell Ng, MD

Risk Factors for Re-admission following Surgical Decompression for Spinal Epidural Abscesses: An Analysis of 4,595 Patients

Mitchell Ng, MD

Web Docs: A Comparative Analysis of ChatGPT versus Google Web Search as a Source of Patient Information for Anterior Cervical Discectomy and Fusion and Arthroplasty

Mitchell Ng, MD

ChatGPT as a Source of Patient Information for Lumbar Spinal Fusion and Laminectomy: A Comparative Analysis Against Google Web Search

Mitchell Ng, MD

GPT-4 as a Source of Patient Information for Anterior Cervical Discectomy and Fusion: A Comparative Analysis Against Google Web Search

Mitchell Ng, MD

Surgical Trends in Use of Cervical Disc Arthroplasty versus Anterior Cervical Discectomy and Fusion from 2010 to 2021

Mitchell Ng, MD

Modern Internet Search Analytics: Is There a Difference in What Patients are Searching Regarding the Operative and Nonoperative Management of Scoliosis?

Mitchell Ng, MD

Risk Factors for Surgical Intervention and 90-Day Post-Operative Readmission for Vertebral Compression Fractures: An Analysis of 703,499 Patients

Mitchell Ng, MD

Google Trends: A Temporal, Seasonal, and Geographic Analysis of Public Interest in Lumbar Decompression and Fusion Surgery

Mitchell Ng, MD

Semaglutide Use Prior to Single-level Lumbar Fusion Associated with Fewer Re-admissions and 90- Day Costs

Mitchell Ng, MD

Forty-Six Years of Technological Innovation in Musculoskeletal Medicine: An Analysis of a Patent Database (1973 to 2018)

Mitchell Ng, MD

Revision Rates After Single-Level Cervical Disc Arthroplasty Versus Anterior Cervical Discectomy and Fusion: An Observational Study With 5-Year Minimum Follow-Up

Mitchell Ng, MD

Effect of operative time in outcomes following surgical fixation of hip fractures: a multivariable regression analysis of 35,710 patients

Mitchell Ng, MD

Unicompartmental knee arthroplasty revised to total knee arthroplasty versus primary total knee arthroplasty: A meta-analysis of matched studies

Mitchell Ng, MD

Skin Closure Regarding Posterior Fusion Spinal Deformity

Jake Schwartz, MD

Ganglion Cyst Recurrence: A Nationwide Comparative Analysis in Adults vs. Pediatric Populations

POSTER PRESENTERS

Bhavya Sheth, MD

Electric Scooter Injuries: An Analysis of Orthopaedic Injury Patterns, Admissions, and Operative Intervention Rates at a New York City Level 1 Trauma Center

Bhavya Sheth, MD

Risk Evaluation: Subtalar Fusion Post Calaneal ORIF

Rushabh Vakharia, MD

Is Higher Body Mass Index a Predictor of Lumbar Stenosis: A Retrospective Magnetic Resonance Imaging Study

Rushabh Vakharia, MD

Liposomal Bupivacaine Does Not Decrease Post-operative Pain in Patients with Intracapsular Femoral Neck Fracture Treated with Hemiarthroplasty: HEAT, A Randomized, Controlled Trial

PEDIATRICS

Katja Anuth, DO

Pediatric Invasive Group A Streptococcus (iGAS) Infections Pre-, During, and After the COVID-19 Pandemic at Maimonides Children's Hospital

Jessica Olivia Lat, MD, MBA

Comparison of the pre and post COVID-19 pandemic weight gain in children over a 5 year period in a low income neighborhood in Brooklyn, NY

PSYCHIATRY

Jinal Patel, MBBS

Intersections of race and queerness: Analysis of risk, demographics, and service utilization at a Brooklyn-based LGBTQ+ mental health clinic

Gabriella Arth, DO

Traumatic Experiences amongst Psychiatric Inpatients in a Community Mental Health Center

SURGERY

Yeonjoo Cho, MD

Lack of Anorectal Imaging Diversity in Colorectal Surgery Textbooks

Kathryn D. Esposito, MD

Rising Residency Application Costs: An Applicants Perspective

Mudathir Ibrahim, MBBS

Outcomes of Early compared to Delayed Initiation of Feeding after Placement of Percutaneous Endoscopic Gastrostomy Tube: A Systematic Review and Meta-Analysis

Yitzchak Katlowitz, MD

Urology and Artificial Intelligence: Is ChatGPT a Reliable Resource?

Yitzchak Katlowitz, MD

AI-Driven Andrological Evaluation and Diagnosis: Advancing Men's Health with Intelligent Assistance

Yitzchak Katlowitz, MD

Not Quite Ready for the Pediatric Urology Playground: An Assessment of ChatGPT and Cryptorchidism

Yitzchak Katlowitz, MD

Active Trials on Emerging Erectile Dysfunction Strategies: Sources and Directions

Yitzchak Katlowitz, MD

Surprising Success: AI's Potential Heavy Impact in Treating Urological Trauma

Elie Kaplan-Marans, MD

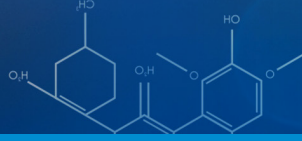
Geographic Disparity of High-Volume Collagenase Clostridium Histolyticum Providers: A National Population-Based Analysis

Jenna Kroeker, MD

Challenges of Azygous Vein Trauma: A Systematic Review of Case Reports

Mariela Martinez, MD, MS

Adverse Events Associated with the Penuma® Penile Implant: An Analysis of the Food and Drug Administration Manufacturer and User Facility Device Experience Database



Benjamin H. Shpeen, MD

Review of SpaceOAR Complications In The MAUDE Database With Focus on Rectal Wall Infiltration

Michael West, MBBCh

Urinary Retention After High Intensity Focused Ultrasound for Prostate Cancer: Changing Practice at a High-Volume Center

Michael West, MBBCh

Early Safety Outcomes with the FocalOne® HIFU System for Treatment of Localized Prostate Cancer

Michael West, MBBCh

Same Day Discharge After Robot-Assisted Simple Prostatectomy is Safe and Cost-Effective

Michael West, MBBCh

Socioeconomic Disparities in Relation to Stage of Testicular Cancer at Diagnosis

Michael West, MBBCh

Racial Disparities in Testicular Cancer in the United States

Staff

EMERGENCY MEDICINE

Aaron Chen, MD

Single Dose Amikacin for Uncomplicated Cystitis in the ED: A Feasibility Study

Aaron Chen, MD

Pericapsular Nerve Group (PENG) Block vs. the Fascia Iliaca Compartment (FIC) Block for Patients with Isolated Hip Fractures in the Emergency Department.

Jemer Garrido, BS

Evaluating Virtual Reality Interventions for Pediatric Acute Pain Syndromes in the Emergency Department: A Feasibility and Effectiveness Study

OBSTETRICS & GYNECOLOGY

Julia Fisher, BS

Surgical Morbidity Following Planned Hysterectomy vs. Conservative Management for Placenta Accreta Spectrum – A Systematic Review and Meta Analysis.

Olivia Sher, MPH

Machine Learning for the Prediction of Placenta Accreta Spectrum – Systematic Review and Diagnostic Meta Analysis

Maimonides Summer Research Experience

PEDIATRICS

Lekha Patel, M.S.

Characterization of Long COVID in the pediatric and adolescent population at Maimonides Children's Hospital