



POSTER PRESENTERS

Fellow

EMERGENCY MEDICINE

Diormi A. Rosario, DO

Does a Positive Respiratory Viral Panel Decrease the Risk of Serious Bacterial Infections in Febrile Neonates?

Jennifer Wolin, MD

Physician Influence on Refusals of Medical Assistance at an Urban Online Medical Control Facility

OBSTETRICS & GYNECOLOGY

Judy Hayek, MD

De-escalation of Radiation Therapy in Advanced Endometrial Cancer: Analysis of the National Cancer Database

Allix Hillebrand, MD

Provider Preferences, Knowledge, and Understanding of Topical Hemostatic Agents and Their Derivatives: A Survey of Gynecologic Surgeons

Kelly Lamiman, MD

Impact of Robotic Assistance on Minimally Invasive Surgery for Type II Endometrial Cancer: A National Cancer Database Analysis

Valerie O'Besso, MD

The Dynamics of Surgical Practice: A Comparative Study on Operative Experiences, Perceived Respect, and Scheduling Challenges Among Gynecological and General Surgeons

Youssef Youssef, MD

Effect of Body Habitus on Opening Pressure During Veress Needle Insertion

SURGERY

Dominika Dziadecki, MD

Human-Assisted Learning: How Artificial Intelligence Performs on the BESAP

Performance Improvement

EMERGENCY MEDICINE

Sophia Lam, MD

Analysis of Reading Level in Resident Discharge Communication: A Large Language Model Approach

Luke Weber, MD

Implementation of Anonymous Polling for Peer Review

MEDICINE

Cherry Maung Maung Aye, MBBS

Optimizing Statin Use for Primary Prevention of Atherosclerotic Cardiovascular Disease in People Living with HIV

Pyae Hein Kyaw, MBBS

Enhancing Depression Screening in Primary Care: Identifying Gaps and Implementing Solutions

Carla Barberan Parraga, MD

Impact of Sociodemographic Status on Hospital Length of Stay in Inflammatory Bowel Disease (IBD) Patients

Carla Barberan Parraga, MD

Improving Colorectal Cancer Screening Rates in Outpatient Setting

OBSTETRICS & GYNECOLOGY

Joselle O'Brien, MD

Quality Improvement: Reducing the Episiotomy Rate at Maimonides Medical Center

PEDIATRICS

Katja Anuth, DO

Improving Patient Handoff Between Residents from the Pediatric Emergency Department to the Pediatric Floor

Jeremy Silverstein, BA

Pack and Play – Providing Birthing Parents with Safe Sleeping Spaces for Newborns

POSTER PRESENTERS

Amanda Winn, MD

Can Texting Improve Residents' Dermatology Performance?

Albert Yao, MD

Improving Procedural Skills Training for Pediatric Residents

POPULATION HEALTH

Magdalena Gordon, LMSW

A Spectrum of Care Management: Integrating Services Into Clinical Settings

PSYCHIATRY

Wonyun Lee, MB

Beyond Pills and Talks: Learning to Prescribe Psychosocial Rehabilitation through Peer Services

QUALITY MANAGEMENT

Ilya Goldstein, MPH

Optimizing Hospital Efficiency: Using Regression Analysis to Reduce Length of Stay

SURGERY

Amanda Reynolds, MD

Preliminary Analysis of Change of Financial Toxicity in Breast Cancer Patients During Treatment

Gene Sobol, MPH

Surgeon's Review of C-SATS as a Continued Method of Performance Assessment and Enhancement of Operative Skills

Resident

EMERGENCY MEDICINE

Mahlaqa Butt, DO, MPH

Evaluating Outcomes of Patients with Suspected Pulmonary Embolism Using an Age-Adjusted Cutoff for a D-dimer Unit (DDU) Based Assay

MEDICINE

Cherry Maung Maung Aye, MBBS

Building Bridges: Strengthening Continuity of Care through Resident Patient Empanelment

Syed Matthew Kodilinye, MBBS

Use of a Novel Point of Care Test for Helicobacter Pylori Screening in a High-Risk U.S Population: A Descriptive Analysis

Carla Barberan Parraga, MD

Burden of comorbid psychiatric illnesses among hospitalized patients with Autoimmune Liver Disease: A Nationwide cohort analysis

May Thet Hmu Tun, MBBSCh

Epidemiology and Outcomes of Infective Endocarditis in a Brooklyn Community Hospital: A Comparison of Pre- and Post-Pandemic Eras

OBSTETRICS & GYNECOLOGY

Meghna Ramaswamy, MD

Investigating the Barriers to Contraceptive Use Among South Asian Women in Brooklyn: A Cross-sectional Study

Colby Rondeau, DO

Ability of Women to Accurately Predict Their Post Void Residual Volume

Thammatat Vorawandthanachai, MD

Self-Assessment of Healthcare Worker Communication with Language Diverse Patients In Obstetrics And Gynecology

Thammatat Vorawandthanachai, MD

Utilization of Low-Cost Detection Pads to Confirm Diagnosis of Rupture of Membranes in Lower Resource Settings

ORTHOPEDICS

Charles Conway, MD

Obstructive Sleep Apnea is Associated with Increased Rates of Acute Respiratory Failure, Length of Stay, and Hospital Costs in Patients Undergoing Elective Single-level Anterior Cervical Discectomy and Fusion

Alexandra Debasitis, MD

National Trends in Rare Hemipelvectomy Procedures from 2010 to 2022

Alexandria Debasitis, MD

Single-Level Anterior Cervical Discectomy and Fusion is Associated with Higher Non-Routine Discharge Rates Compared to Cervical Disc Arthroplasty in Obese Patients

Jesse Galina, MD

Long Term Survival of Osteochondritis Dissecans Fixation Methods

Aaron Lam, MD

Evaluation of Safety and Performance Outcomes of the Fibulink Syndesmosis Repair System with Early Full-Weight Bearing

Aaron Lam, MD

Orthopaedic Injury Patterns and Trends Following New York City's Electric Scooter and Bike Legalization: Data from an Urban Level 1 Trauma Center

Gabriel Lama, MD

Cement Augmentation of Total Knee Arthroplasty Reduces Aseptic Loosening in Celiac Disease

Gabriel Lama, MD

Impact of Vitamin D Deficiency on Medical and Surgical Outcomes Following Total Knee Arthroplasty: A Propensity-Matched Analysis

Gabriel Lama, MD

Increased Incidence of Thromboembolic Complications in Celiac Patients Following Total Joint Arthroplasty: An Analysis of 23,459 Patients

Gabriel Lama, MD

Total Hip Arthroplasty at Least Two Years Following Total Knee Arthroplasty Provides the Most Optimum Outcomes for Ipsilateral Lower Leg Arthroplasty

Matthew Magruder, MD

Accuracy of ChatGPT for Literature Citations in Lower Limb Arthroplasty

Matthew Magruder, MD

Dislocation Rates and Revisions: Robotic vs. Computer-navigated Hip Replacement Outcomes

Matthew Magruder, MD

Impact of Sex, Age, and Comorbidities on Osteonecrosis Development After Intertrochanteric Hip Fractures: A Retrospective Analysis

Matthew Magruder, MD

Platelet-rich Plasma Injections Within 6 Months of Total Knee Arthroplasty Increase the Risk of Postoperative Surgical Site Infections

Matthew Magruder, MD

Testosterone Replacement Therapy Prior to Total Knee Arthroplasty Results in Increased Surgical Site Infections and Revision Surgeries

Matthew Magruder, MD

Does a Lip Liner or Increased Diameter of the Femoral Head Provide More Stability in Total Hip Arthroplasty?

Matthew Magruder, MD

Testosterone Replacement Therapy Prior to Total Hip Arthroplasty Results in Increased Aseptic Loosening and Revision Surgeries

Matthew Magruder, MD

GLP-1-Based Ozempic Stratification for Primary Total Knee Arthroplasty

Chaim Miller, MD

National Trends in Fibular ORIF: Plate/Screw Fixation vs. Nail (2015-2022)

Chaim Miller, MD

Trends of Proximal Row Carpectomy Utilization

POSTER PRESENTERS

Chaim Miller, MD

Risk Factors in Progression to Wrist Arthritis Following Distal Radius Fractures

Chaim Miller, MD

Risk Factors Associated with 5 Year Conversion to Total Wrist Fusion Following Wrist Salvage Procedures

Chaim Miller, MD

Distal Radius and Wrist Fractures Within Two Years Prior to Carpal Tunnel Surgery are Not a Contraindication to Endoscopic Surgery

Mitchell Ng, MD

Semaglutide Use is Associated with Higher Rates of Pseudarthrosis and Dysphagia in Patients Undergoing Posterior Cervical Fusion

Mitchell Ng, MD

Teriparatide Use in Osteopenic Patients Undergoing Lumbar Fusion

Mitchell Ng, MD

Postoperative Dysphagia After Anterior Cervical Discectomy and Fusion (ACDF): A Large Scale Cohort Analysis of Risk Factors and Interventions

Mitchell Ng, MD

Postoperative Dysphonia After Anterior Cervical Discectomy and Fusion (ACDF): A Large Scale Cohort Analysis

Mitchell Ng, MD

Increased Revision Rates in Patients Undergoing Hip Resurfacing with Prior Lumbar Fusion

Mitchell Ng, MD

Access to Robotic Spine Surgery in the Continental United States: A Geospatial Analysis

Karen Noh, MD

Fixation Method Comparison Following Intertrochanteric Fractures: A Trends Study

Ariel Rodriguez, MD

Mid-term Patient-reported Outcomes Following Use of the Internal Joint Stabilizer for Unstable Injuries of the Elbow

Jake Schwartz, MD

Pitch Counts and Injury Incidence in Major League Baseball: Responses to Pitch Clocks and Defender Rule Changes

Jake Schwartz, MD

Increased Infection Rate Following Shoulder Arthroplasty in Inflammatory Bowel Disease Patients

Jake Schwartz, MD

Arthroscopic Repair Versus Biceps Tenodesis for Treatment of SLAP Tears: A Trend Analysis

Jake Schwartz, MD

Shifts in Primary Management of Lisfranc Management: A Trends Study

Jake Schwartz, MD

Similar Revision Rates in Rotator Cuff Repair when Using Ultrasound or MRI for Preoperative Diagnostic Imaging

Bhavya Sheth, MD

Anterior Cruciate Ligament Reconstruction with Modified-Lemaire Lateral Extraarticular Tenodesis Reduces Graft Rupture and Revision Rates: A Systematic Review and Meta-Analysis

Bhavya Sheth, MD

Association between Preoperative Depression Screening and Rotator Cuff Repair Complications, Readmissions, and Costs

Bhavya Sheth, MD

Preoperative Corticosteroid Injections are Associated with a Dose-Dependent Risk for Complications Following Anatomic and Reverse Total Shoulder Arthroplasty

PEDIATRICS

Janvi Bhavsar, MBBS

Racial Disparities in Acquisition of Liver Transplant in Patients of Short Bowel Syndrome and Other Causes of Intestinal Failure through Descriptive Analysis of National Inpatient Sample 2021

Jessica Olivia Lat-Pfeiffer, MD, MBA

Colonic Diverticulitis in the Pediatric Population: A Retrospective Study of Nineteen Patients

SURGERY

Yeonjoo Cho, MD

The White Board Time Out Intraoperative Educational Tool Improves Resident Operative Performance

Gina DeMeo, DO

Clinical Trials for Sexual Dysfunction: Recent Trends and Interventions

Gina DeMeo, DO

Drawing a Blank: AI Depictions of Women in Surgery

Elie Kaplan-Marans, MD

UroGPT is Superior to ChatGPT in Concordance with AUA Testosterone Deficiency Guidelines

Yitzchak Katlowitz, MD

Simply Pixels or Surgical Precision: DALL-E on Urologic Surgery

Yitzchak Katlowitz, MD

Artificial or Intelligent? Generative AI's Urologic Organ Representation

Staff

CARDIAC CATH LAB

Richard Casazza, MAS, RT (R)(CI)

HARRA Study

DEPARTMENT OF PSYCHIATRY

Marta Victoria Colon, LCSW

HUG (Help Us Grow): Effects of a Therapeutic Summer Camp in Inner City Youths with Diverse Mental Health Needs 2024

EMERGENCY MEDICINE

Aaron Chen, MD

The Impact of Suctioning on Oxygenation During RSI in the Emergency Department: A Multi-Center Pilot Randomized Controlled Trial

Sarah Kabariti, MPH

A Time and Motion Study to Understand Clinical Workflow

PEDIATRICS

Mariam Mahgoub, Research Assistant

ScreenPlus Newborn Screening Program Recruitment at Maimonides Medical Center

PSYCHIATRY

Deborah Ariyibi, BS

Surviving History: Re-traumatization of Holocaust Survivors from the Former Soviet Union Amid Russo-Ukrainian Conflict

SURGERY

Allison Carroll, BS

Concordance of Prostate Cancer Clinical Trials and Disease Incidence in the United States



ABSTRACT REVIEWERS COMMITTEE

Hannah Bodenstein
MBA, BSN, RN

Jason Brady
Pharm.D., BCPS

Bernadine Donahue
MD, FACR, FACP

Carole Filangieri
PhD

Itamar Futterman
MD, FACOG

Marcia Hodge
DNP, MSN, RN, CCNS

Rukhsana Hossain
MPH

Erica Hutchison
PhD

Theresa Jacob
PhD, MPH

Jocelyne Karam
MD

Jonathan Klein
MD, MSc, FRCPC, DABR

Yelena Kogelman
MD

Tsoline Kojaoghlanian
MD

Antonios Likourezos
MA, MPH

Yu Shia Lin
MD

Kishor Malavade
MD

Sergey Motov
MD, FAAEM

Tamar Motov
RN, BSN, MSN-CNL

Jeffrey M. Nicastro
MD, FACS, FCCM

Nina Paddu
DO, DABOM

Allison R. Polland
MD

Kavitha T. Ram
MD

Afshin E. Razi
MD, FAOA, FAAOS

Haitham Salem
MD, PhD

Sameh Samy
MBBCh, MSA, CPHQ, CSSBB

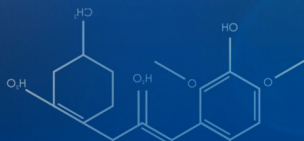
Michael Silver
MS

Deepan Singh
MD

Janet L. Stein
MD, MS

Justin To
MD, FACOG

Hector Vazquez
MD, MSc



SUPPORT & FUNDING

Sponsors

MAIMONIDES MEDICAL CENTER

MAIMONIDES RESEARCH & DEVELOPMENT FOUNDATION

The Maimonides Research & Development Foundation was established in 1982 to provide seed funding for investigator-initiated research at Maimonides Medical Center, through the generosity of Benjamin & Betty Eisenstadt. The present Foundation's Board of Directors is chaired by their grandson, Steven Eisenstadt. The Foundation sponsors two competitive grant cycles each year which offer awards up to \$25,000 per grant. Grant proposals are reviewed and scored by a cadre of scholars at Maimonides Medical Center. Many recipients of research grants from the Foundation have successfully published the results of their studies in peer reviewed journals.

The Maimonides Office of Research Administration provides a range of services and supports for research at the hospital, including technical assistance, education, resources, workshops, regulatory and compliance support, basic science labs, and funding opportunities.

Support

We are grateful to the following groups for their ongoing support for tonight's event

DEPARTMENT CHAIRS

MEDICAL STAFF LEADERSHIP

**IN GRATITUDE TO THE MAIMONIDES INSTITUTIONAL REVIEW BOARD
FOR THE WORK DONE ON ALL ABSTRACTS SUBMITTED TO THIS EVENT**

**IN GRATITUDE FOR THE WORK DONE ON THIS EVENT BY THE
MAIMONIDES HEALTH MARKETING & COMMUNICATIONS DEPARTMENT**